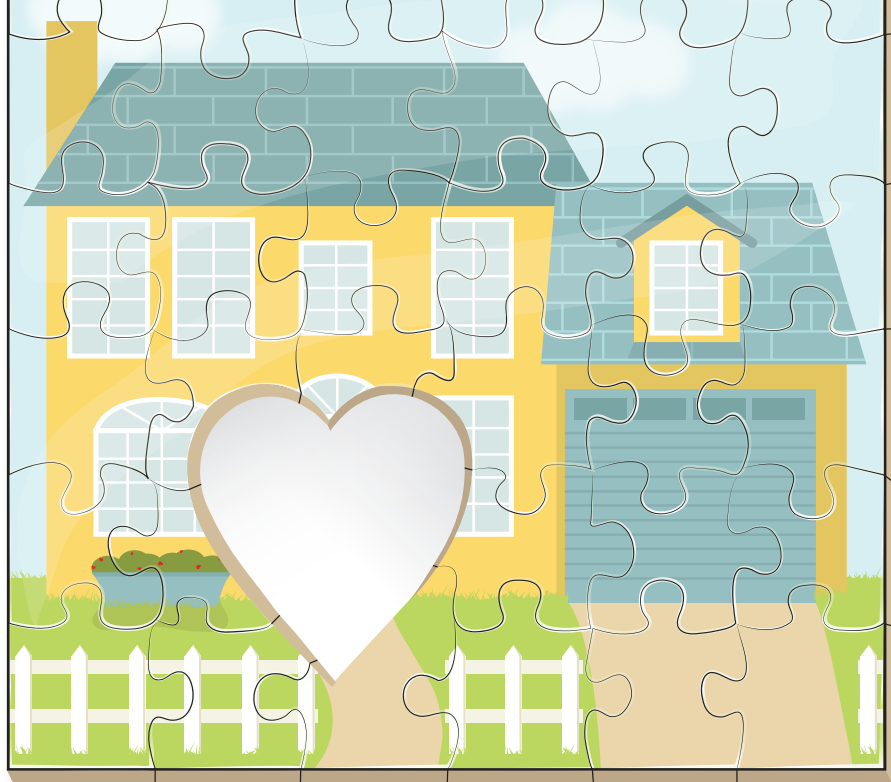


# MOVING FAMILIES FROM HOMELESSNESS TO SELF-SUFFICIENCY ...



## HOW WE SERVE OUR COMMUNITY

### PREVENTING AND REDUCING HOMELESSNESS

- SHIELD Outreach Center
- Family Casework / Homeless Prevention and Intervention
- Homeless Outreach Services

### EDUCATING AT RISK CHILDREN

- HALO Child Enrichment Center
- YES! Youth Education Success
  - After-School Tutoring
  - Summer Day Camp

### RESTORING FAMILY STABILITY AND INDEPENDENCE

- Family Emergency Shelter
- Family Living Center

### MEETING THE NEEDS OF THE FAMILY

- Recreational Programs
- Youth Character Building
- Senior Outreach
- Musical Instruction
- Sunday Worship Services
- Spiritual Education



## The George W. Jenkins Community of Hope

**... is the final piece of the puzzle.**

*Want to know more?*

[www.salvationarmylakeland.org](http://www.salvationarmylakeland.org)

Majors Ken & Connie Morris  
Corps Officers / Pastors



P.O. Box 928 | Lakeland, FL 33802 | 863-940-2868